

Club Shirts



**Club Shirts are
\$38.00 / each**

COAL HARBOUR®



Heat transfer neck label

Rib knit collar

Double needle cover stitch at sleeve and bottom hem

Everyday Snag Resistant Polo

S365

Product Features:

- 6.9-oz, 100% performance polyester micropique

Adult sizes: S-4XL



3-button placket with dyed-to-match buttons



Available Colours and PMS Colours

Textile fabric colours are subject to dye lot variation and will not be exact match to print pantone reference



Due to the nature of polyester, special care must be taken throughout the decoration process.

S365 - Everyday Snag Resistant Polo

Garment Measurements

Size	S	M	L	XL	2XL	3XL	4XL
Chest - Half Measure	20"	21 1/2"	23"	24 1/2"	26"	28"	30"
Chest - Full Measure	40"	43"	46"	49"	52"	56"	60"
Body Length from HPS	29"	30"	31"	32"	33"	33 1/2"	34"
Sleeve Length - CB	18 1/2"	19 1/4"	20"	20 3/4"	21 1/2"	22 1/4"	23"

Finished measurements in inches. Refer to "How to Measure" guide for detailed information on measurement instructions.

Adult General Sizing Guide

Size	S	M	L	XL	2XL	3XL	4XL
Chest	34"-36"	38"-40"	42"-44"	46"-48"	50"-52"	54"-55"	56"-57"
Waist	29"-32"	32"-35"	35"-38"	38"-41"	41"-44"	44"-47"	47"-50"
Sleeve Length - CB	32"-33 1/2"	34"-35"	35"-36"	36"-37"	37"-38"	38"-39"	38 1/2"-39"

COAL HARBOUR®



Everyday Snag Resistant Ladies' Polo

L365

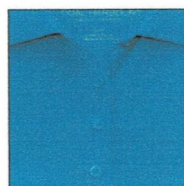
Product Features:

- 6.9-oz, 100% performance polyester micropique

Ladies' sizes: XS-3XL



4-button placket with dyed-to-match buttons



Available Colours and PMS Colours

Textile fabric colours are subject to dye lot variation and will not be exact match to print pantone reference



Due to the nature of polyester, special care must be taken throughout the decoration process.

L365 - Everyday Snag Resistant Ladies' Polo

Garment Measurements

Size	XS	S	M	L	XL	2XL	3XL
Chest - Half Measure	18"	19"	20"	21 1/2"	23"	24 1/2"	26 1/2"
Chest - Full Measure	36"	38"	40"	43"	46"	49"	53"
Body Length from HPS	26"	26 1/2"	27"	28"	29"	30"	30 1/2"
Sleeve Length - CB	14"	14 1/2"	15"	15 5/8"	16 1/4"	16 7/8"	17 1/2"

Finished measurements in inches. Refer to "How to Measure" guide for detailed information on measurement instructions.

Ladies' General Sizing Guide

Size	XS	S	M	L	XL	2XL	3XL
Numeric Size	2	4-6	8-10	12-14	16	18-20	22
Bust	32"-34"	35"-36"	37"-38"	39"-41"	42"-44"	45"-47"	48"-51"
Waist	24"-25"	26"-27"	28"-30"	30"-32"	33"-35"	36"-38"	40"-42"
Hip	33"-35"	35"-37"	37"-39"	39"-41"	42"-44"	45"-47"	48"-50"
Sleeve Length-CB	30"-30 1/2"	30 1/2"-31"	31 1/2"-32"	32 1/2"-33"	33 1/2"-34"	34"-34 1/2"	34 1/2"-35"